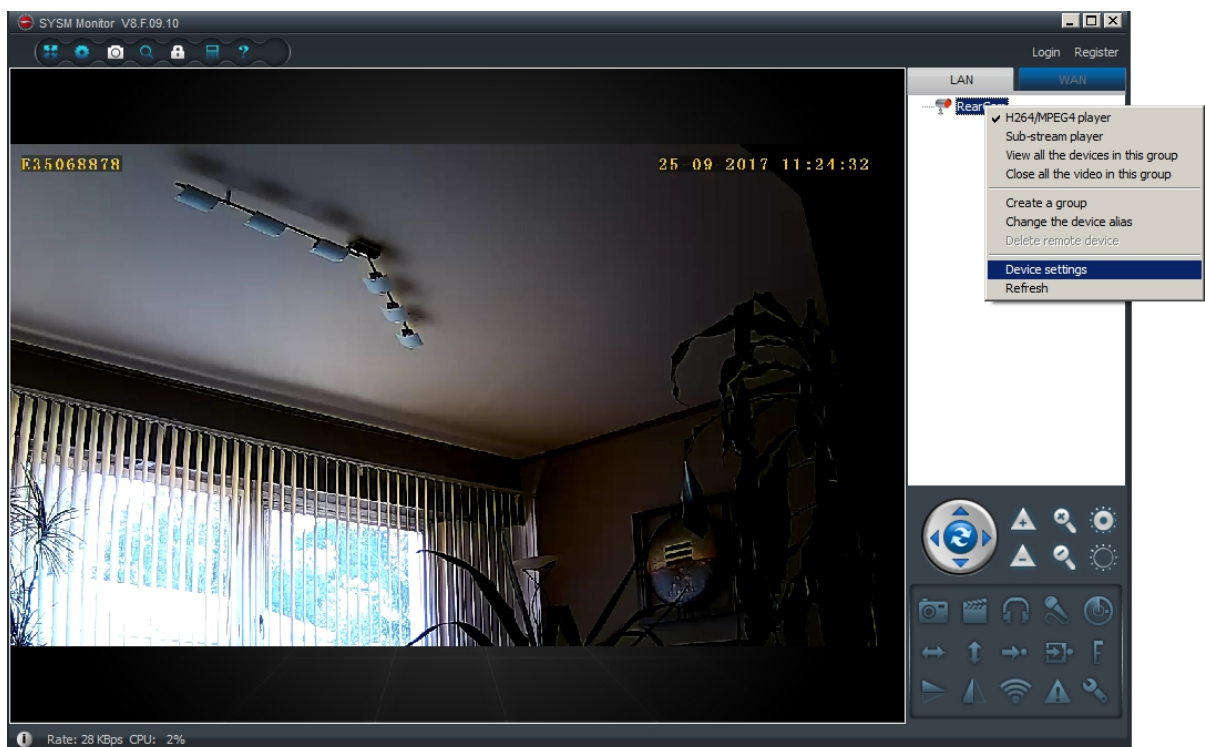
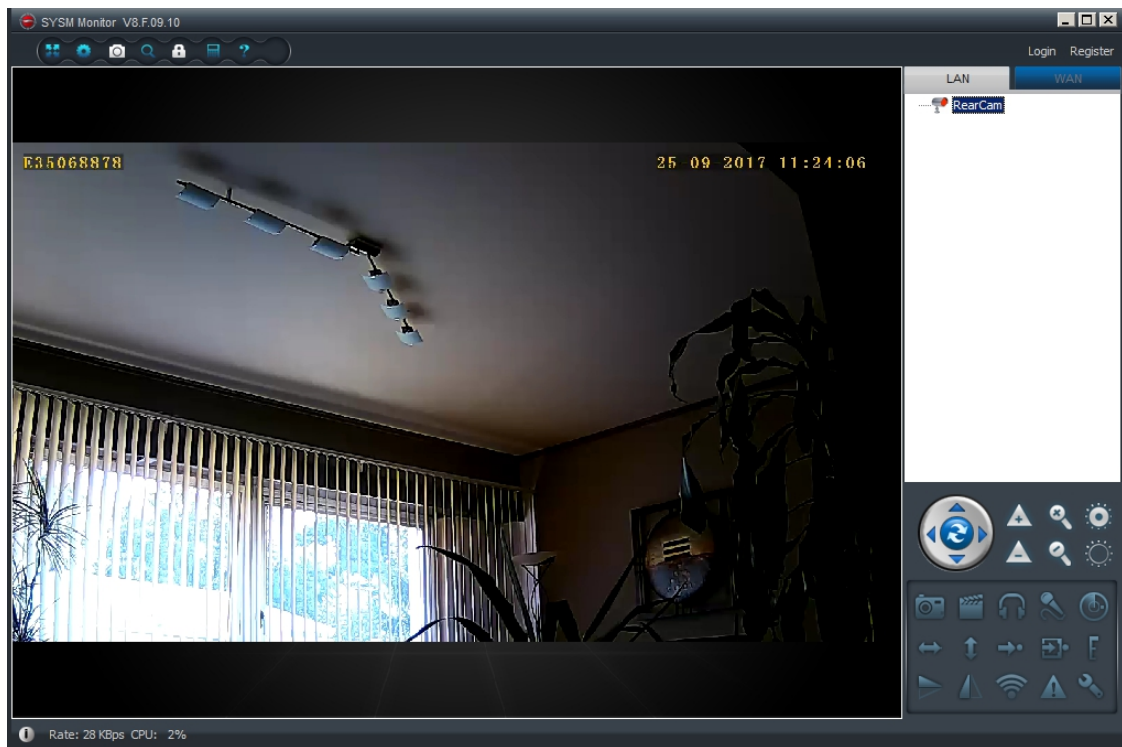


SYSM monitor V8.F.09.10

standard settings for movement detection

Main Window



Network Settings

V2.0.200 E35068878

Network settings

- Set the IP address
- Wireless Setting
- 4G network settings

Video settings

- Video settings

Storage Settings

- SD card settings
- SD card search recorded
- FTP settings
- Local video settings
- ONVIF settings

Alarm settings

- Trigger conditions
- Mail Settings
- Alarm recording settings
- Alarm call notification

Device management

IP address information

☒ DHCP
☐ Fixed IP address

IP address: 192 . 168 . 178 . 25

Subnet mask: 255 . 255 . 255 . 0

Gateway address: 192 . 168 . 178 . 1

Preferred DNS server: 192 . 168 . 178 . 1

Mac address: 00:16:07:04:1C:F0

☐ Only use the device in the LAN

Device status
Login successful

Configuration successful,the device will auto reboot.

Apply

V2.0.200 E35068878

Network settings

- Set the IP address
- Wireless Setting
- 4G network settings

Video settings

- Video settings

Storage Settings

- SD card settings
- SD card search recorded
- FTP settings
- Local video settings
- ONVIF settings

Alarm settings

- Trigger conditions
- Mail Settings
- Alarm recording settings
- Alarm call notification

Device management

☒ Start WiFi setting

Network name (SSID): 0
WirelessCS Scan

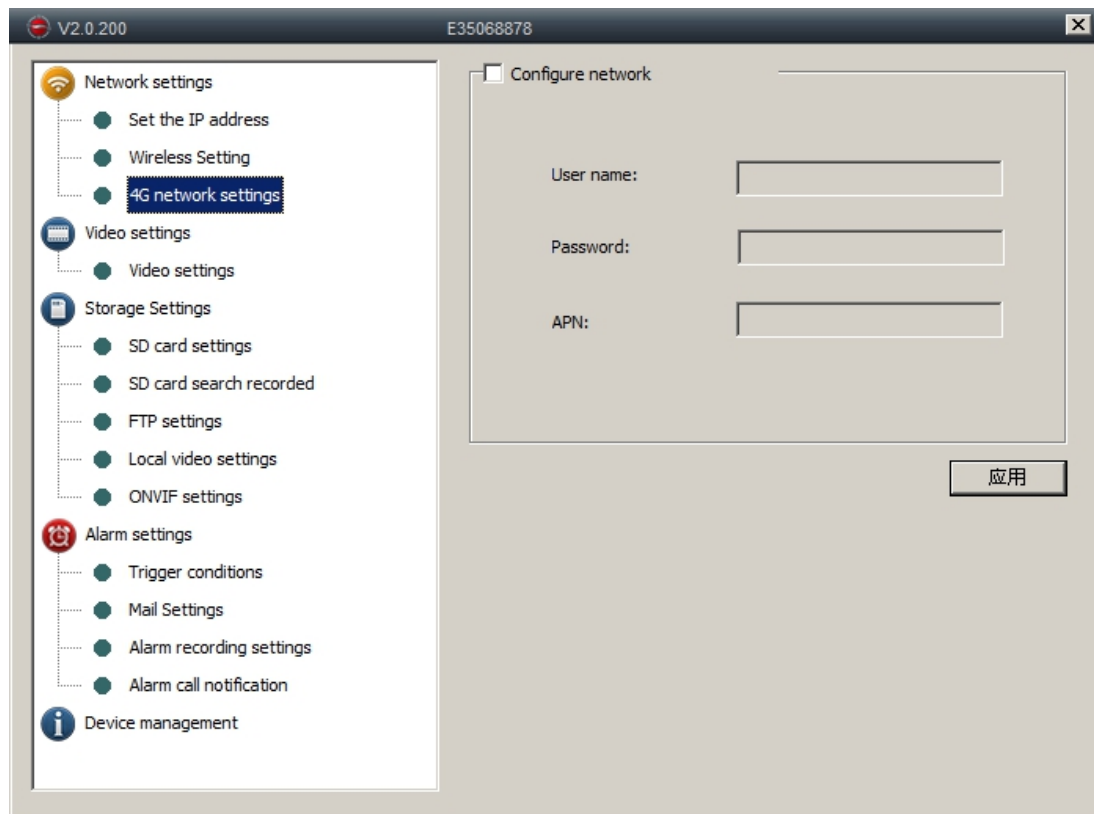
Wireless security type
WPA2-PSK

Data encryption:
AES

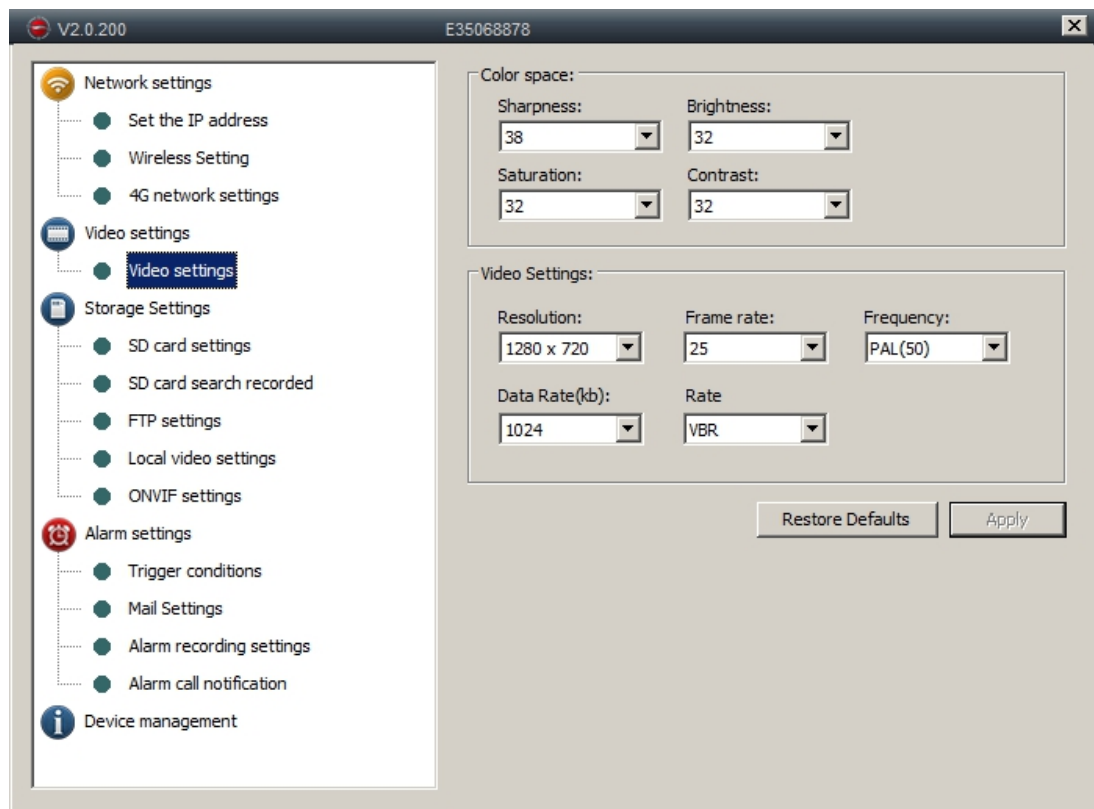
Password:
.....

Configuration successful,the device will auto reboot.

Apply



Video Settings



The screenshot displays the E35068878 V2.0.200 interface. On the left, a sidebar menu lists various settings categories: Network settings, Video settings, Storage Settings, Alarm settings, and Device management. Under 'Storage Settings', 'SD card settings' is highlighted. The main area shows the 'SD card capacity' section with a table of values: Total capacity (15168 MB), Used capacity (1528 MB), and Remaining capacity (13640 MB). Below this is the 'Recording configuration' section, which includes checkboxes for Alarm recording, Start automatic recording, Auto cycle recording, and Voice recording. It also features a 'Video Settings' dropdown menu set to 'Main stream' and a 'Video partition size (MB)' input field set to '50'. A red warning message states '* SD card doesn't support hot swapping!'. At the bottom right, there are 'Format SD card' and 'OK' buttons.

SD card capacity:	
Total capacity(MB):	15168 MB
Used capacity(MB):	1528 MB
Remaining capacity(MB):	13640 MB

Recording configuration

- ☒ Alarm recording
- ☐ Start automatic recording
- ☐ Auto cycle recording
- ☐ Voice recording

Video Settings: Main stream

Video partition size(MB): 50

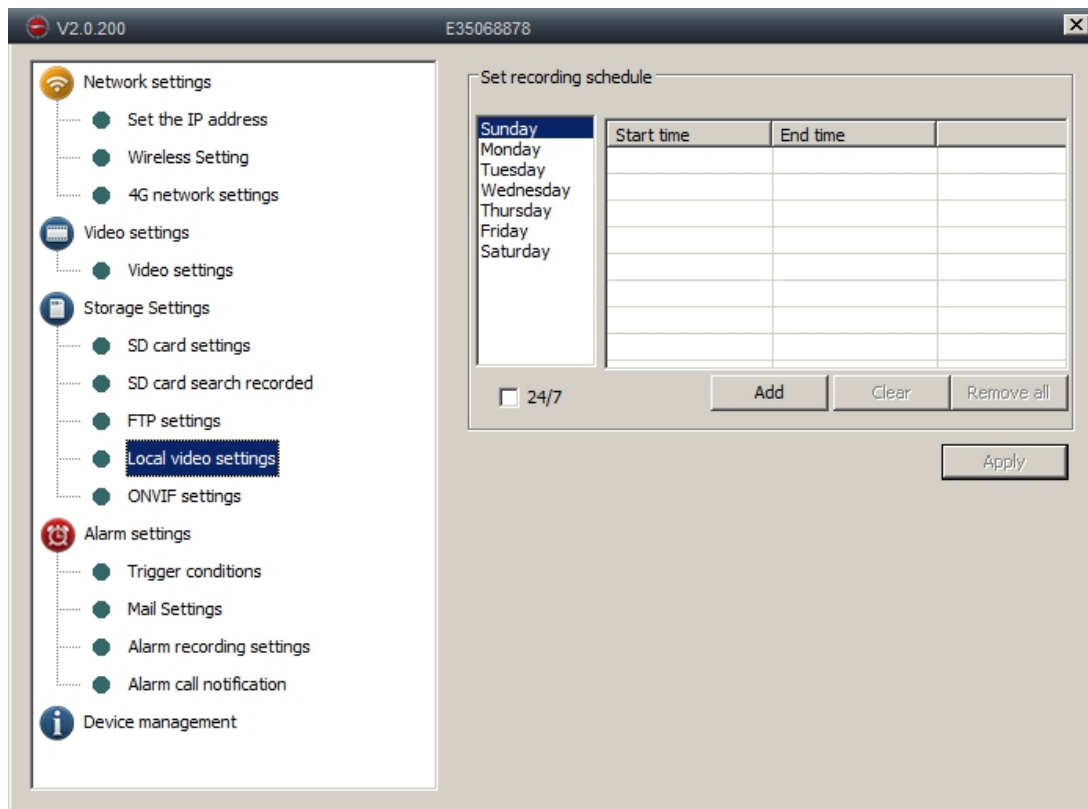
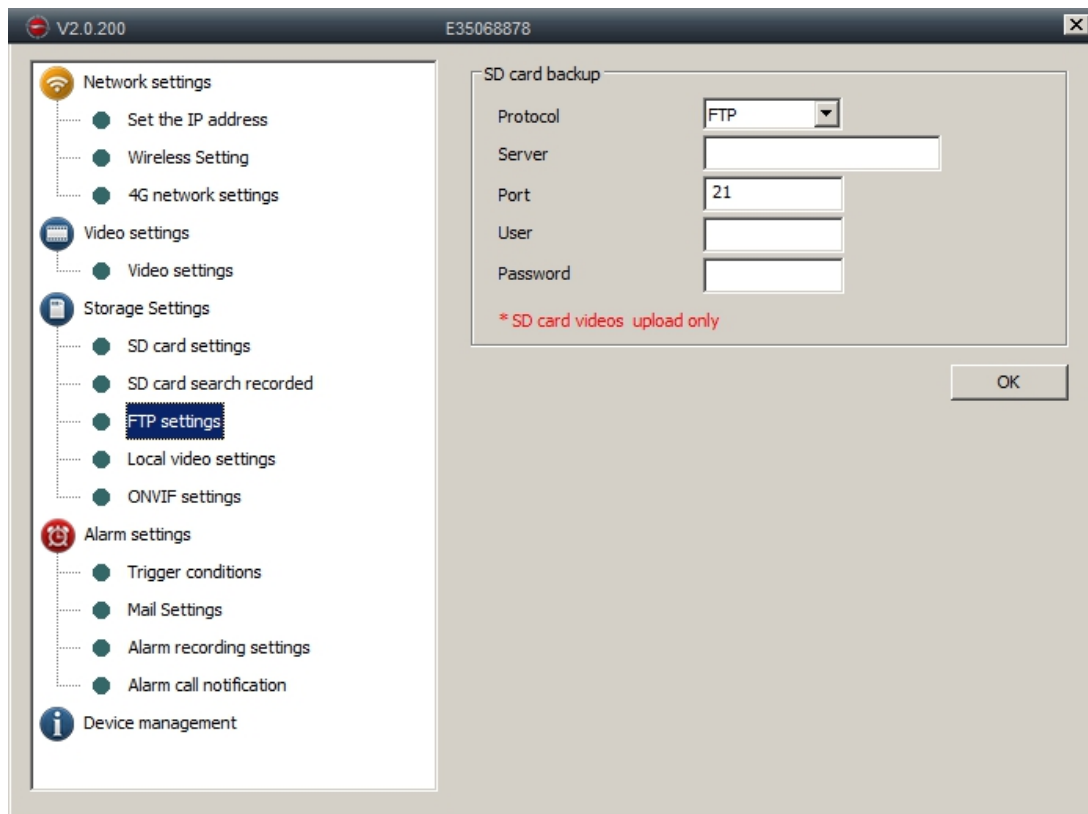
* SD card doesn't support hot swapping!

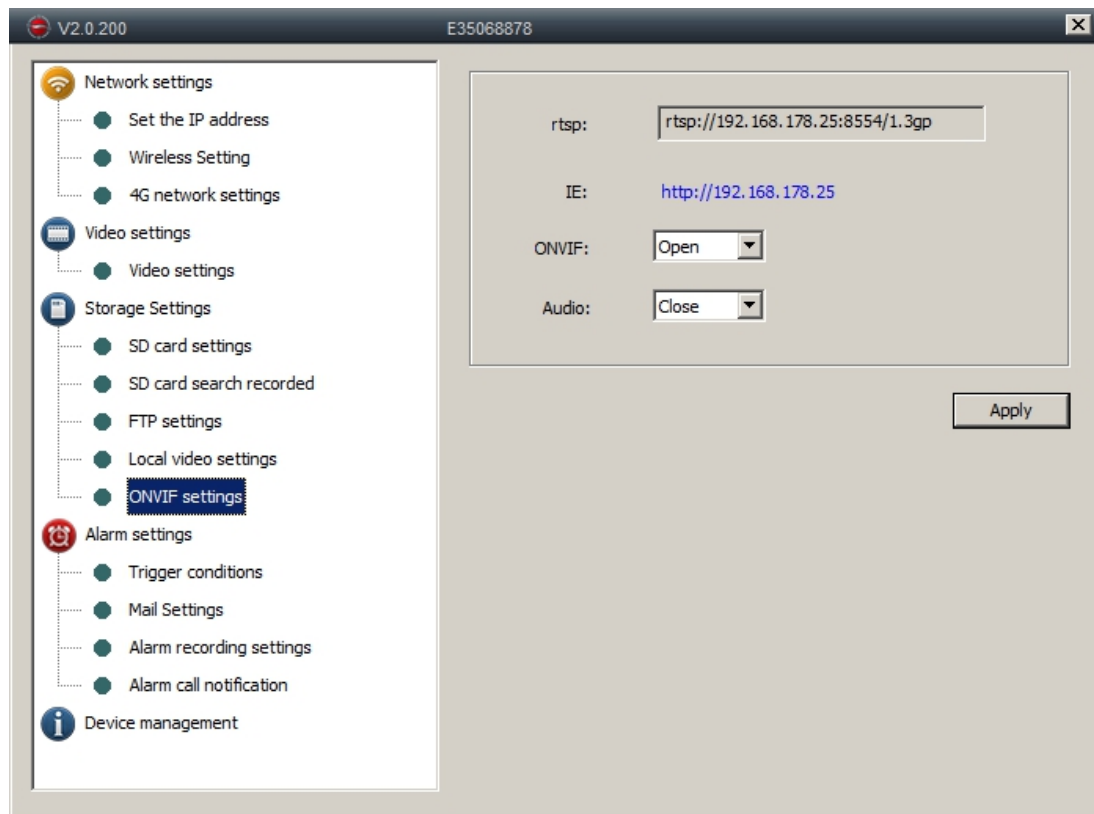
Format SD card OK

The screenshot shows the web interface of a device with IP E35068878, version V2.0.200. The left sidebar contains a menu with the following items:

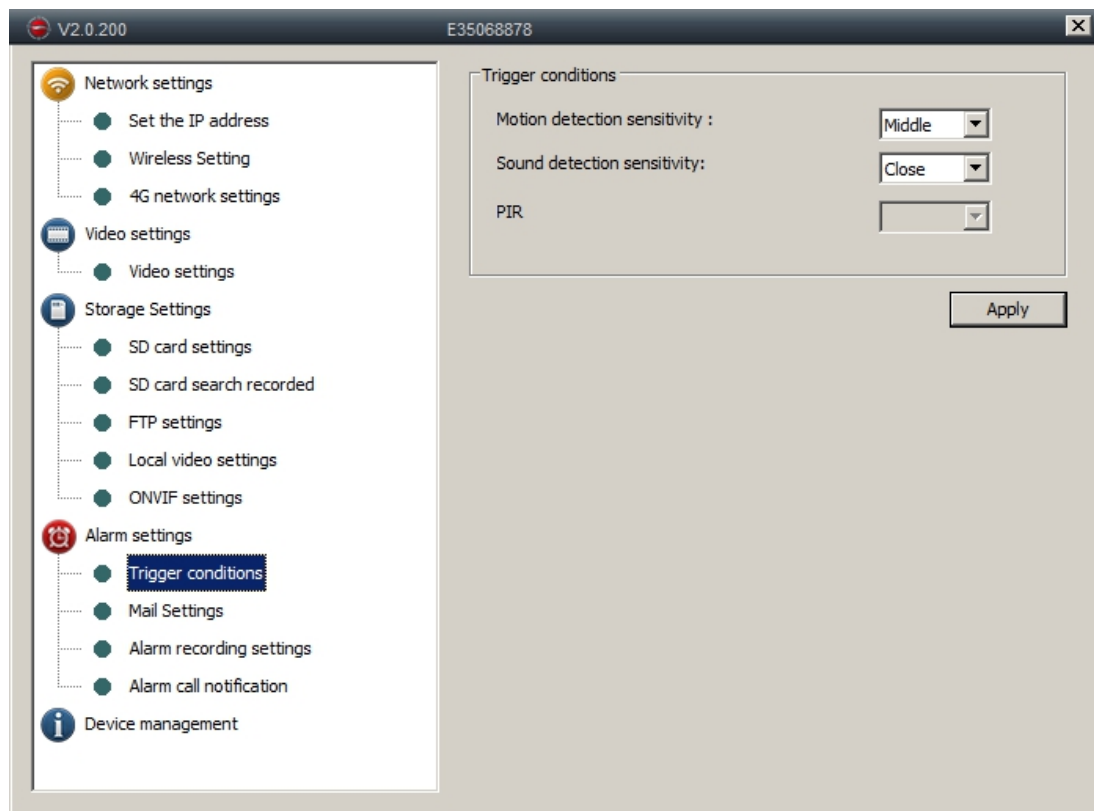
- Network settings
 - Set the IP address
 - Wireless Setting
 - 4G network settings
- Video settings
 - Video settings
- Storage Settings
 - SD card settings
 - SD card search recorded**
 - FTP settings
 - Local video settings
 - ONVIF settings
- Alarm settings
 - Trigger conditions
 - Mail Settings
 - Alarm recording settings
 - Alarm call notification
- Device management

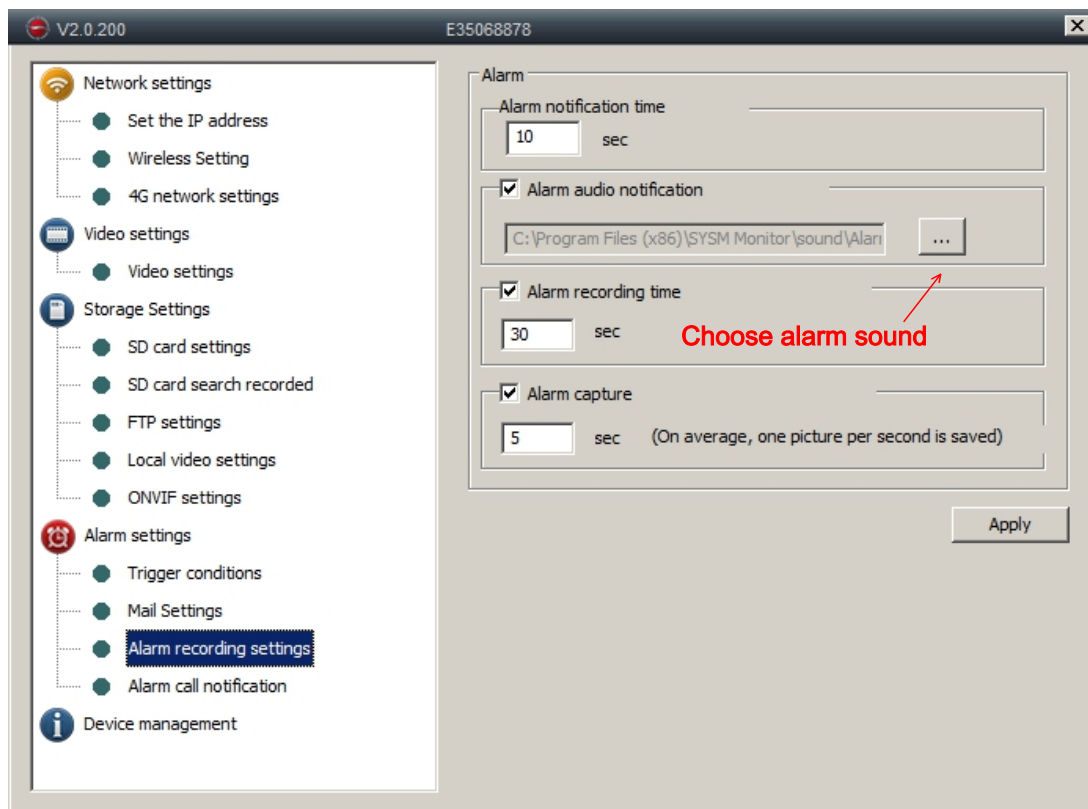
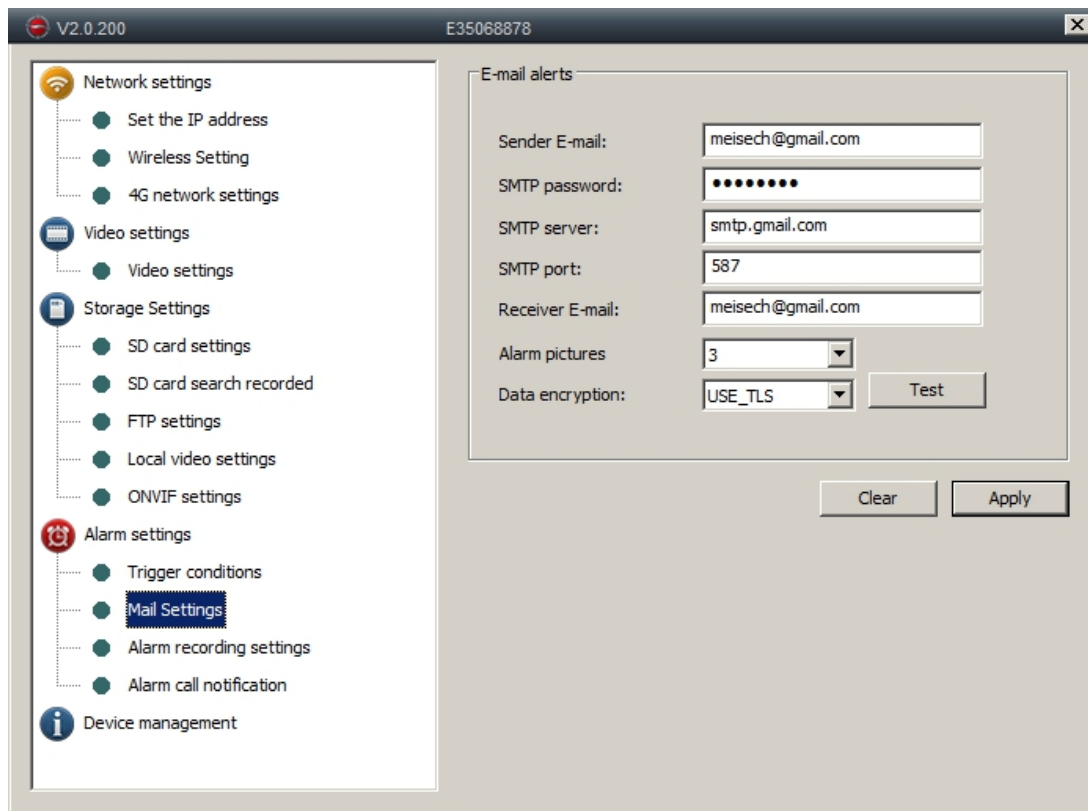
The main content area displays the 'SD card search recorded' status. It includes a 'Start time' field set to '2017.09.25', an 'End time' field also set to '2017.09.25', a 'Search' button, and an 'Open download directory' button. Below these is a table with the following columns: ID, Start time, File name, and File size. The table is currently empty. At the bottom right, there are 'Previous' and 'Next' navigation buttons.

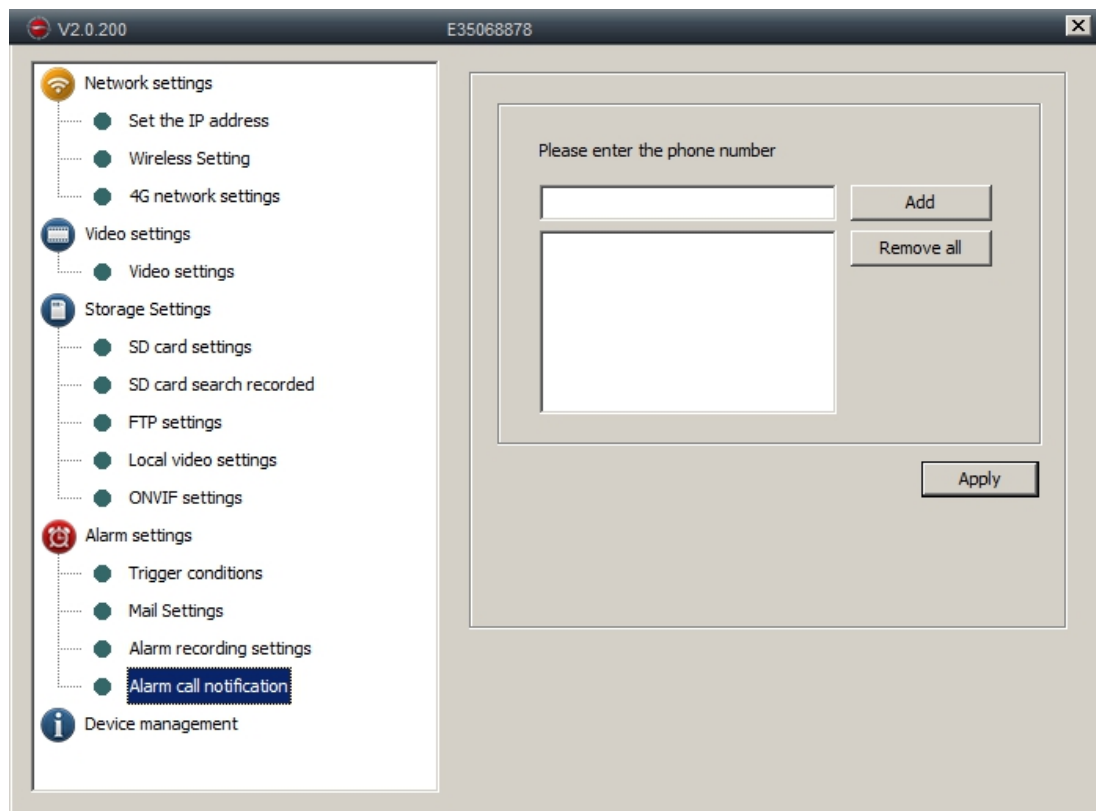
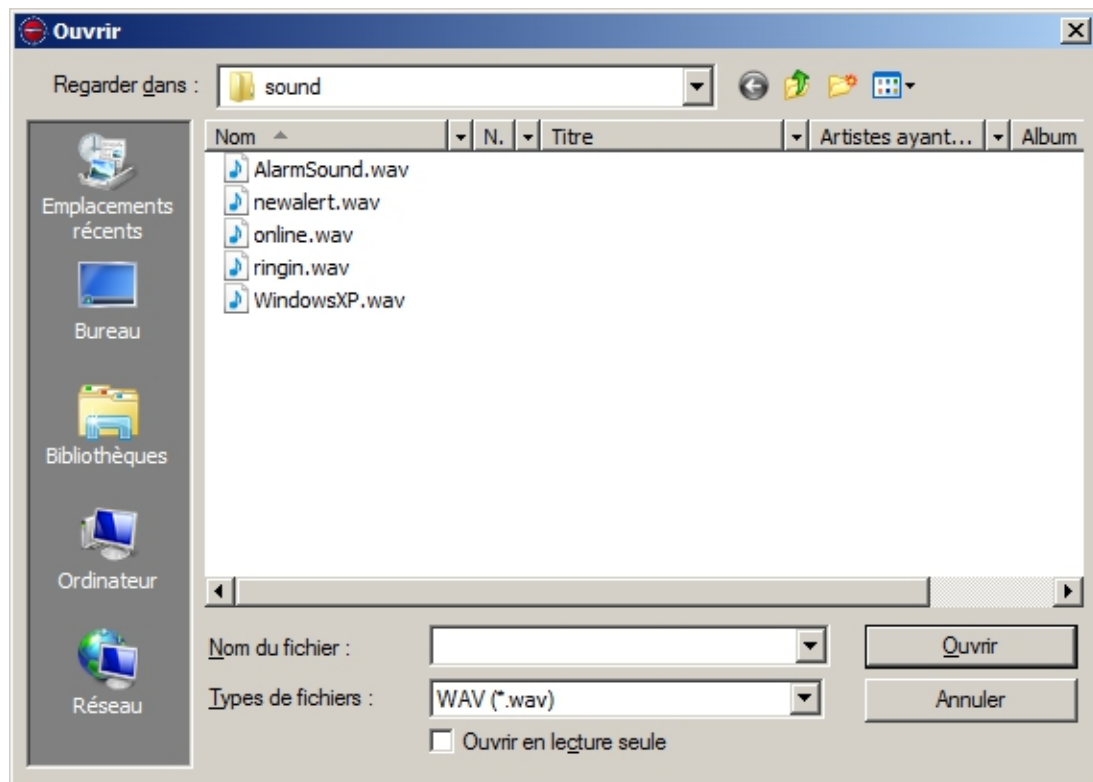




Alarm Settings







Define detection area

